

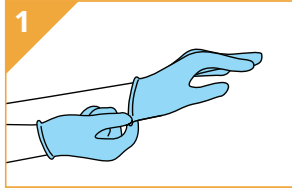
ENVIRONMENTAL SAMPLING PROTOCOL



TOOLS

- Clear Sample Bag
Cat No. ISEV001
- Sponge
Cat. No. ISEV002
- Gloves

PROCEDURE



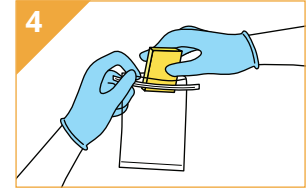
Put gloves on.



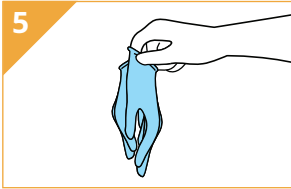
Remove sponge from pouch.



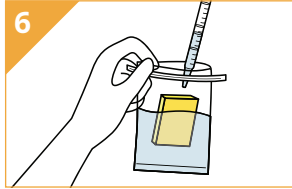
Sample area of interest.



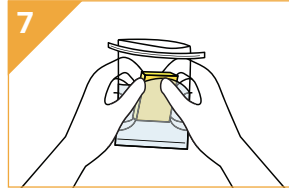
Place sponge into clear bag and seal.



Remove and dispose of gloves.



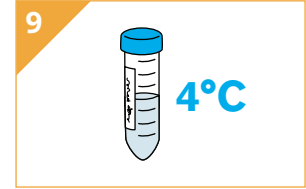
Add 60 mL sterile water to bag with sponge.



Squeeze sponge in water solution for 15 seconds.



Remove 25 mL and process using standard Veriflow® brewPAL™ protocol.



Retain remaining liquid sample in 50 mL conical tube at 4°C and label with sample ID.