

Technical Bulletin

11th February 2010

New Quant FT-NIR System Sampling Accessory

Rotating 100 mm Petri Dish Accessory

Q-Interline A/S is introducing a new sampling accessory for Petri dishes. The interchangeable modular accessory fits into the Quant sample area as standard and collars screw into the Quant ports.

A 100mm diameter Petri dish (glass, Teflon or plastic) is placed into the accessory holder. The dish is rotated during analysis so a larger volume of sample is analysed. This will result in improved analysis repeatability and more representative bulk analysis compared to a static dish for certain sample types.

The rotating accessory is recommended for samples with any inhomogeneity (ground meat, ground powders, grated cheese, sandwich fillings, etc.)

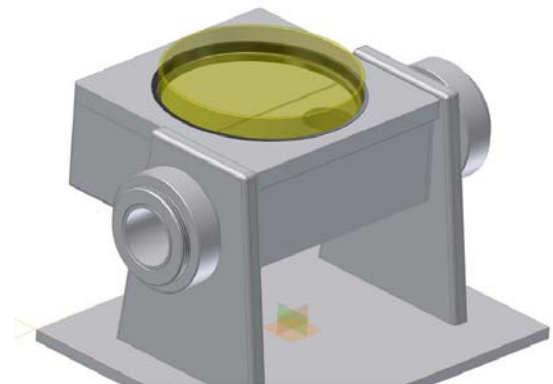


Figure 1: Spinning Petri Dish Accessory

The technical drawing shown in Figure 1 illustrates the design.

Please note that for grains, pellets, feeds, forage, etc. it is recommended that the rotating bottle accessory is used as the sample is mixed and rotated during analysis.

This accessory will be available from April 2010.

